

*All we did was capture
beauty in its vividness*



HERMOSA



HERMOSA
innovate · develop · accomplish

Company Profile

Oreana Quartz Stone & Ceramic [Engineered Quartz Surface] is a modernized, big enterprise specialized in manufacturing quartz stone marble, Nano Double Charge, GVT, Rustic and Wall Tiles (Digital Printing) collection. Recently established and developed speedily over a decade it has become a group company of SSIPL (Status Keramik (I) Pvt. Ltd.) with wide sales and dealer's network in India.

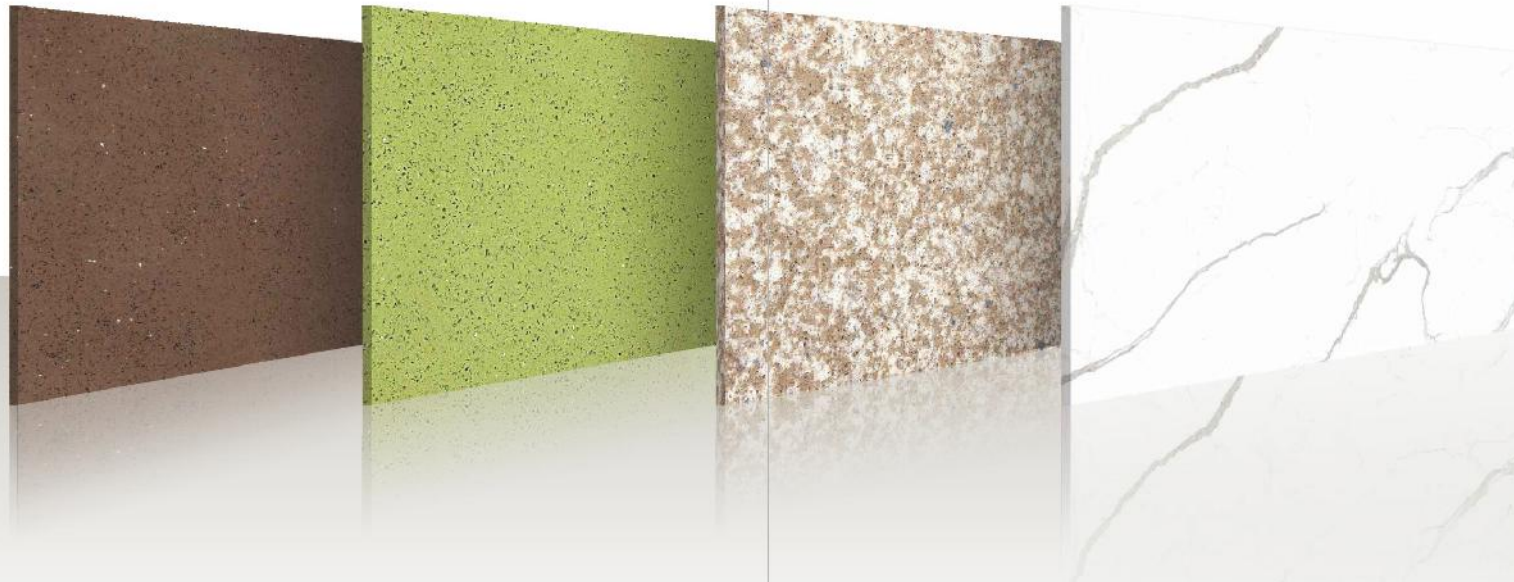
With an annual output production of more than 4 million square meter of floor tiles and quartz stone. Oreana has the most sophisticated technology supports and collaborations towards its production setup with the best organization of the world including most experts like, Technology by BRETON (Italy-SPA.), R & D by SHUOYU (China) and Design by OVERLAND QUARTZ STONE (China). The strengths of Oreana lies in its innovative adaptability amidst ever changing market expectations and providing tailor - made product to its clients.

Our team is ever ready to support our customers and provide all necessary technical assistance required. Also on the selection of an appropriate product more detailed information on individual products and their applications can be provided.

We work closely with best of breed global solution providers. Each of these relationships presents us with opportunity to gain additional expertise in the relevant areas. This in turn, enables us to provide our customers with solutions that best fit their requirements. Empowering business with technology has been our driving force and this has been achieved by translating the expertise into value based cost effective solutions.



Engineered Quartz Surface 3050 x 1450mm | 3200 x 1600mm





INDEX

Engineered Quartz Surface	Page No. 6-19
Page No. 20	Application
Advantages	Page No. 21
Page No. 22	Technical Specification
Care and Maintenance	Page No. 23

*Make a statement with
Peace of mind*



FEATURES

High Scratch
Resistance

Dimensional
Stability

Minimal
Water Absorption

Standardized
Thickness

Homogenous
composition

Eco
Friendly



Engineered Quartz Surface
3050 x 1450mm | 3200 x 1600mm



Queen Of Heart



Sa. varin



Calcutta



Carara



Orange Margarita



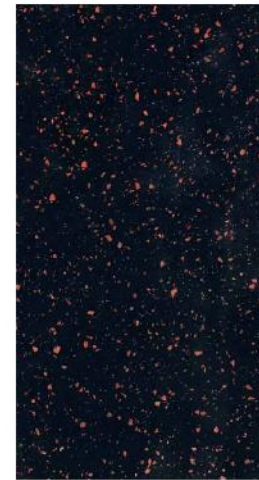
Yellow World



Salvario



Creamy Pasta



Radiant Metalaxy



Golden Glitter

Engineered Quartz Surface
3050 x 1450mm | 3200 x 1600mm



Ice Metaxo



Bronze Glitter



Galaxy Glitter



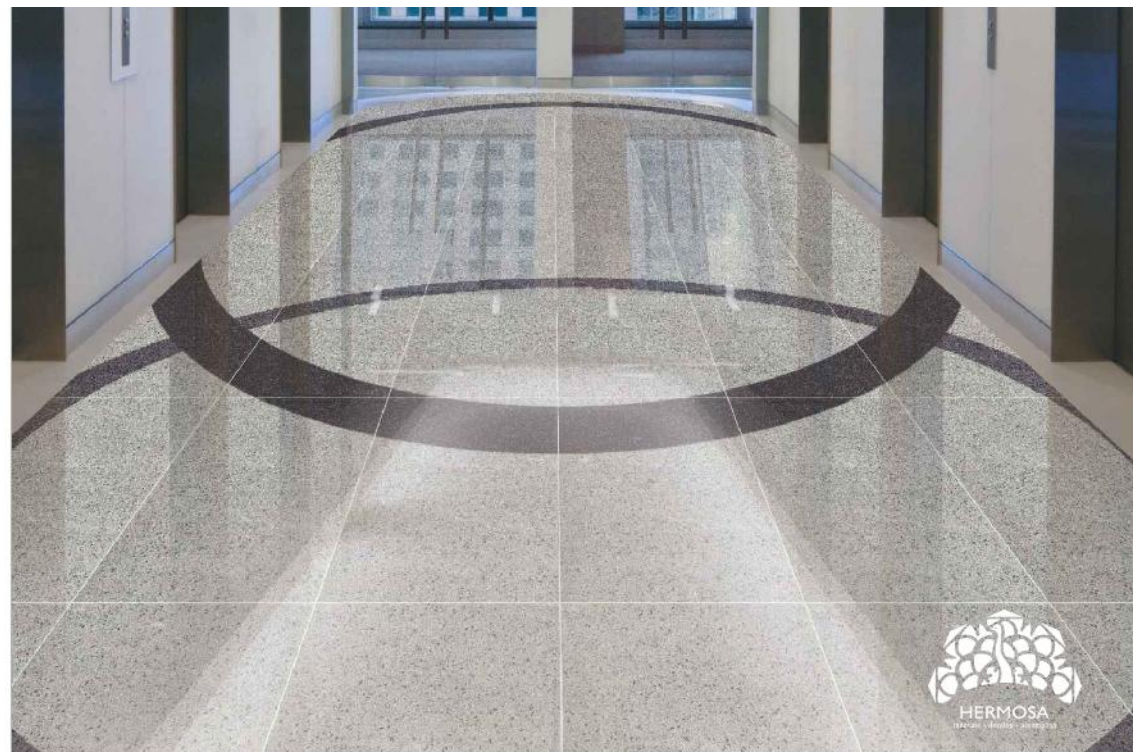
Iron Glitter



Silver Glitter



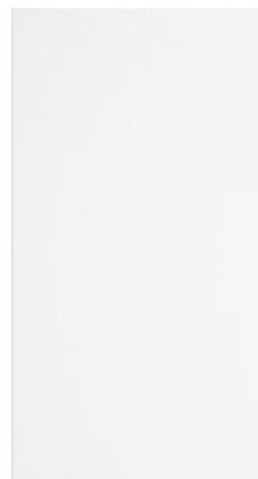
Cocktail Green



Iron Glitter, Silver Glitter



Ceasar

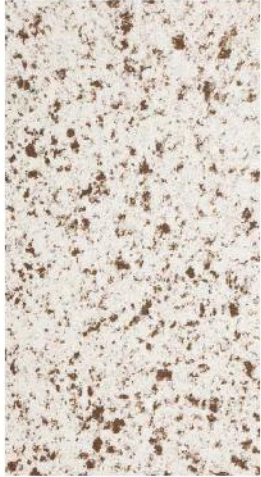


Snow White

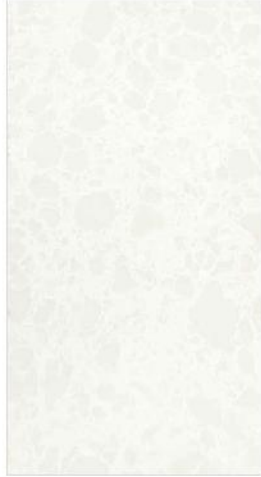


Cement

Engineered Quartz Surface
3050 x 1450mm | 3200 x 1600mm



Atlantic Salt



Pearl White



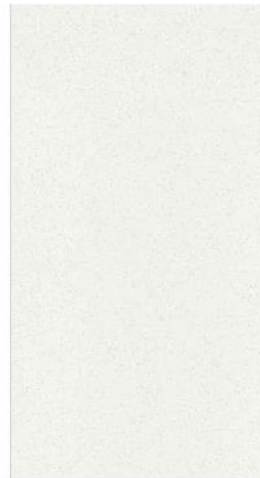
Organic White



Black Night



Sahara Storm



Moon Stone



Pearl White



Nero



Gris Astur



Cosmos Beige

Engineered Quartz Surface
3050 x 1450mm | 3200 x 1600mm



White Cosmos



Titan Beige



Titan Bristol



Nurdia



Shell White



Shell Grey



Shell White



Vitrò Cigío



Cemento Beige



Turma'n

Engineered Quartz Surface
3050 x 1450mm | 3200 x 1600mm



Branco



Winter White



Vanilla



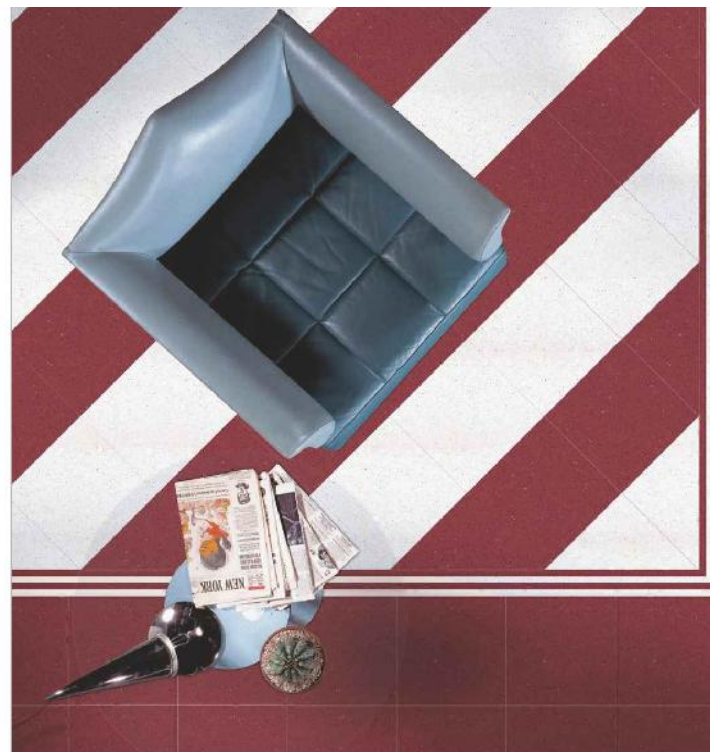
Iced White



Costa Beiga



Garnet



Garnet, Snow Flakes



Goldcore



Azul Blue

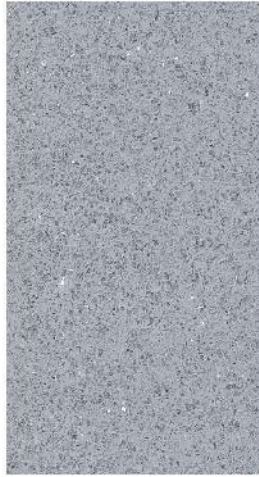


Lepis

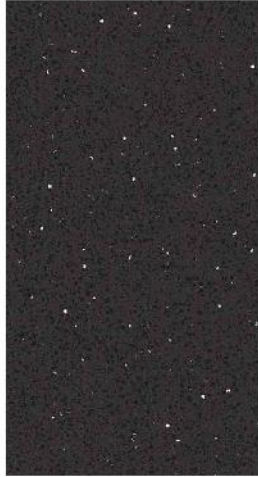
Engineered Quartz Surface
3050 x 1450mm | 3200 x 1600mm



Snow Flakes



Andesite



Qara



Qara



Coasa Maple



Lise Brown



Gris Antracita



Red Chilly



Aqua Marina



Lilore

Engineered Quartz Surface
3050 x 1450mm | 3200 x 1600mm



Caliza Pink



Apple Martini



Caesar Sparkle



Dark Brown



Star Beige



Carara

Engineered Quartz Surface



Sizes & Thickness

STANDARD CUSTOMIZE SIZES



STANDARD SLAB SIZES

1450*3050mm 4'7 1/2" X 10'0"

1600*3200mm 5'2 1/2" X 10'5"0"

Customized sizes available on bulk requirements

Thickness Available

12mm 13mm 18mm 20mm 30mm

Customized thickness on bulk requirements

*Note

Customized Pecking in customized sizes in 12mm can also be provided.

Applications

Kitchen And Bathroom Work-tops

Counter And Bathroom Wall Claddings

Counter And Bathroom Floorings

High Traffic And Moisture Surfaces

Stairs

Hireplaces

Commercial Offices Desks

Reception Desk, Wall & -top

Frontline Topp

Food Service Area

Toilet Partitions

Stair Treads

Bar Tops

Flower Cab Walls

Dressina Quartz Surface is an extremely versatile Product, and as you will see there are many different application for the product. Whether Kitchen or Bathroom, Domestic or Commercial, the possibilities are endless.

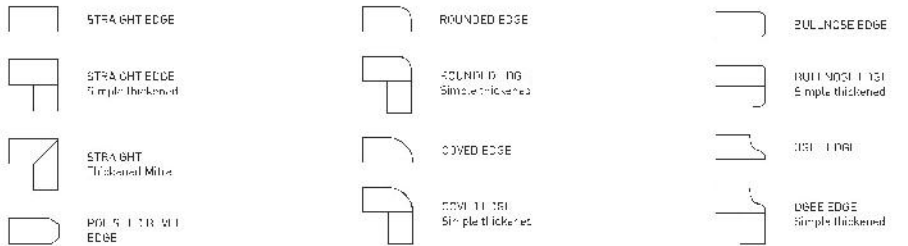
For more information, please contact us.

Main Advantages

- Minimal water absorption
- Uses: Work-tops, vanity tops, floors, walls and high-end stair treads (airports, stores, shopping centers, museums...)
- Dimensional stability that reduces wastage during installation.
- Standardized thicknesses: Tile format: 12mm and slab format: 12mm, 15mm, 18mm, 20mm, 30mm
- Maximum durability
- Maximum impact and flexural resistance
- Resistant to acids, oils, greases...
- High abrasion resistance
- Low cost maintenance and easy cleaning

- ### Other Qualities
- Available in a variety of colors
 - Durable, long-lasting material
 - Smooth, non-porous surface
 - Easy to clean and maintain, absence of cracks or crevices prevent bacteria and mold from accumulating
 - Homogeneous composition allows for even distribution of color throughout material
 - UV light resistant

Edges



Advantages Of Oreana Quartz Surfaces

	Oreana Quartz Surfaces	Granite	Vitrified Tiles	Composite Marbles
Scratch Resistant	★	★	◆	●
Stain Resistant	★	◆	★	●
Chip And Crack Resistant	★	◆	◆	▼
Heat and Burn Resistant	◆	◆	◆	◆
Resistance to Household Chemicals, Acids and Solvents	★	★	★	●
Low Maintenance	★	◆	◆	●
Non absorbent and Non porous	★	◆		●
Mold Mildew Resistant	★	◆	◆	●
Flexural Strength	★	▼	◆	●
Glossiness	★	◆	●	▼
Color Consistency	★	▼	★	★
Immunity to Freeze and Thaw	★	★	▼	▼

★ Excellent ◆ Good ▼ Fair ● Poor

ECO-Friendly Manufacturing for the Environment

Oreana Quartz Surfaces Applies A New Technology Which Has Been Developed And Is Being Manufactured By An Entirely Environmentally Friendly Process.

- Reduces landfill waste
- 99% Filtering of volatile Organic compounds (VOC).
- Advanced use of filtering systems.
- Emission reductions throughout the manufacturing process.
- Re-Use of obsolete and discarded items.
- Recirculation of water usage.
- Energy savings by not using Non-renewable fuels.
- Reduction of natural resources and deforestation.
- 92% of water is recycled.